

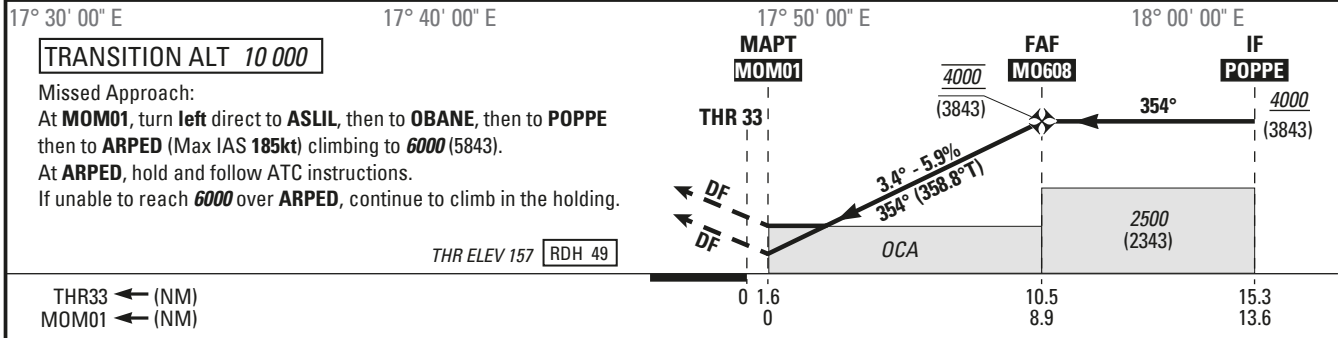
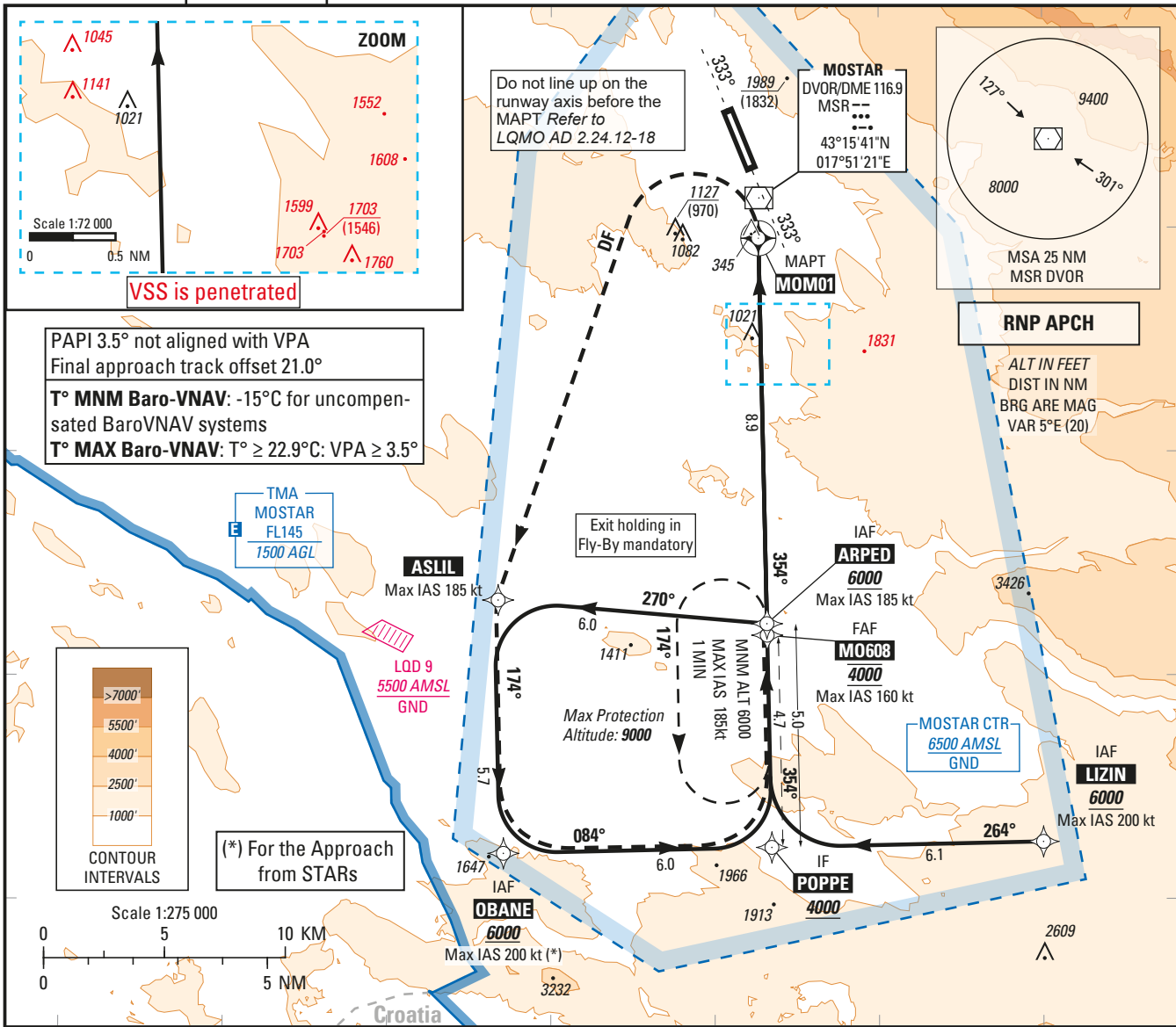
**INSTRUMENT
APPROACH
CHART— ICAO
CAT A B C**

**SBAS
CH 44103
E33A**

AERODROME ELEV 174
HEIGHTS RELATED TO
THR RWY 33 - ELEV 157

TWR 125.550
APP 120.225
129.875
ATIS 126.225

**MOSTAR / MOSTAR (LQMO)
RNP RWY 33**



MNM AD: Vertical distances in feet REF HGT: THR ELEV

	LPV MA 2.5%	LPV MA 4.0%	LNAV/VNAV	LNAV	Circling(1)
CAT	OCA (H)	OCA (H)	OCA (H)	OCA (H)	OCA (H)
A					2290 (2130)
B			1710 (1550)	1710 (1550)	2290 (2130)
C					2390 (2230)

(1) Day time only and not authorized East side of the runway 15/33

DIST MOM01		3	4	5	6	7	8
NM	ALT	1880	2240	2600	2960	3320	3690
	(HGT)	(1723)	(2083)	(2443)	(2803)	(3163)	(3523)

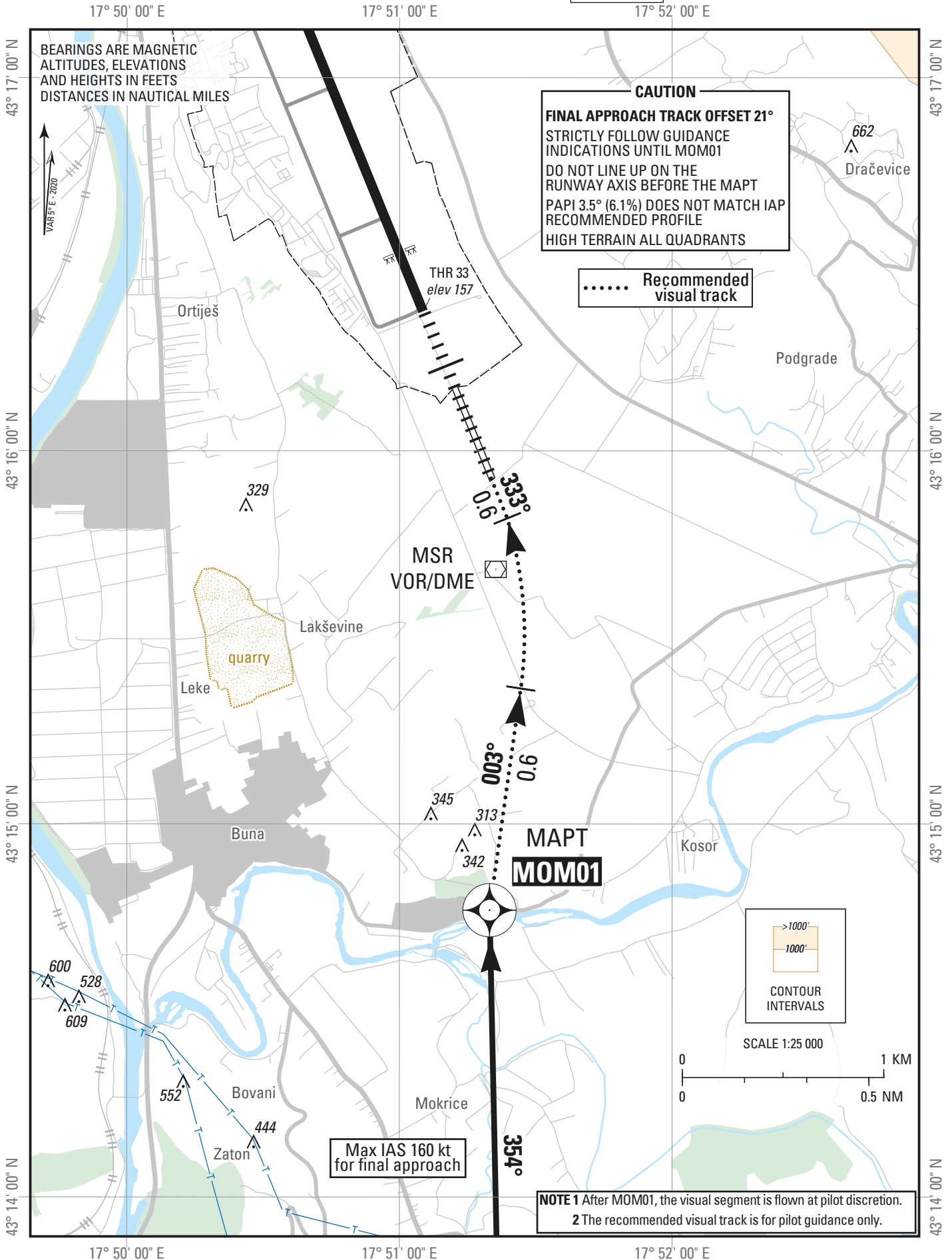
FAF - MAPT (NM)	8.9	Speed Time	70 Kt	85 Kt	100 Kt	115 Kt	130 Kt	145 Kt	160 Kt
			7 min 36	6 min 16	5 min 19	4 min 38	4 min 06	3 min 40	3 min 20
Slope (%)	5.94	VSP (ft/min)	420	510	600	690	780	870	960

**VISUAL LANDING
CHART
CAT A B C**

AD ELEV 174 ft
HEIGHTS RELATED TO
THR RWY 33 - **ELEV 157** ft

TWR 125.550
APP 120.225
129.875
ATIS 126.225

**MOSTAR / MOSTAR (LQMO)
VISUAL LANDING A RWY 33**



LQMO RNP RWY33														
Proposed tabular description for navigation database coding - APPROACH TRANSITION														
Serial number	Fix	Path descriptor	Waypoint name	Flyover	Course °M	Course °T	Magnetic variation	Distance (NM)	Turn direction	Altitude (ft)	Speed (kt)	VPA/TCH (°/ft)	Remarks	NAV SPEC
010	IAF	IF	OBANE				5°E			+6000	-200			RNP
020	IF	TF	POPPE	N	083.680	088.680	5°E	6.000		+4000				APCH
010	IAF	IF	LIZIN				5°E			+6000	-200			RNP
020	IF	TF	POPPE	N	263.866	268.866	5°E	6.069		+4000				APCH
010	IAF	IF	ARPED				5°E			+6000	-185			
020	TF	TF	ASLIL	N	270.078	275.078	5°E	6.027						RNP
030	TF	TF	OBANE	N	173.771	178.771	5°E	5.662		+6000				APCH
040	IF	TF	POPPE	N	083.680	088.680	5°E	6.000		+4000				
Proposed tabular description for navigation database coding - FINAL TRANSITION														
010	IF	IF	POPPE				5°E			+4000				
020	FAF	TF	MO608	N	353.772	358.772	5°E	4.743		@4000	-160	-3.4/49	Do not line up on the runway axis before the MAPT	RNP APCH
030	MAPT	TF	MOM01	Y	353.771	358.771	5°E	8.872		@797				
Proposed tabular description for navigation database coding - MISSED APPROACH														
010		DF	ASLIL	N			5°E		L		-185			
020		TF	OBANE	N	173.771	178.771	5°E	5.662						RNP
030		TF	POPPE	N	083.680	088.680	5°E	6.000						APCH
040		TF	ARPED	Y	353.772	358.772	5°E	5.000		+6000	-185			
050		HF	ARPED	Y	354.000	359.000	5°E		L	-9000	-185		HLDG used only for MA	

Waypoint coordinates		
W/P ID	W/P Type	WGS-84 Latitude WGS-84 Longitude
ARPED	ICAO	43°06'09.2700"N 017°51'34.9900"E
ASLIL	ICAO	43°06'40.9900"N 017°43'23.2200"E
LIZIN	ICAO	43°01'16.7700"N 018°00'00.1000"E
MOM01	ADHP	43°14'46.1200"N 017°51'19.8300"E
MO608	ADHP	43°05'53.8230"N 017°51'35.4470"E
OBANE	ICAO	43°01'01.2600"N 017°43'33.1500"E
POPPE	ICAO	43°01'09.2600"N 017°51'43.7700"E

Input data

Operation Type	0
SBAS Provider	1 (EGNOS)
Airport Identifier	LQMO
Runway	33
Runway Letter	0 (None)
Approach Performance Designator	0
Route Indicator	
Reference Path Data Selector	0
Reference Path Identifier	E33A
LTP/FTP Latitude	431624.4630N
LTP/FTP Longitude	01751169310E
LTP/FTP Ellipsoidal Height (meters)	898
FPAP Latitude	431741.8380N
Delta FPAP Latitude (seconds)	773750
FPAP Longitude	01751146530E
Delta FPAP Longitude (seconds)	-2.2780
Threshold Crossing Height	150
TCH Units Selector	1 (meters)
Glidepath Angle (degrees)	3.40
Course Width (metres)	10500
Length Offset (metres)	0
HAL (metres)	400
VAL (metres)	350

Output data

Data Block	10	0F	0D	11	0C	21	00	00	01	33
	33	05	1E	2A	92	12	86	93	A9	07
	82	17	7E	5C	02	34	EE	FF	2C	81
	54	01	64	00	CB	AF	5B	56	CF	C2
Calculated CRC Value	5B56CFC2									

Required Additional Data

ICAO Code	LQ
LTP/FTP Orthometric Height (metres)	477

EUROCONTROL FAS DB topl Version 32.1